



**GREATER
CAMBRIDGE
PARTNERSHIP**



Greenways Update

7th November 2022



Greater Cambridge Greenways

The Greater Cambridge Greenways are a network of 12 active travel routes into Cambridge from surrounding villages.

Aim: to provide safe, well-connected active travel links within Cambridgeshire for walkers, cyclists and where possible horse riders.

Executive Board: final Board approval for the Greenways project was granted in December 2020.

General Progress: Transport Consultants were appointed in Summer 2021 and the development of the Greenways has been advanced through concept design work and surveying into 2022. Specific details to follow.

Routes include:

Atkins: North routes - St Ives, Waterbeach

Atkins: South routes - Sawston, Melbourn

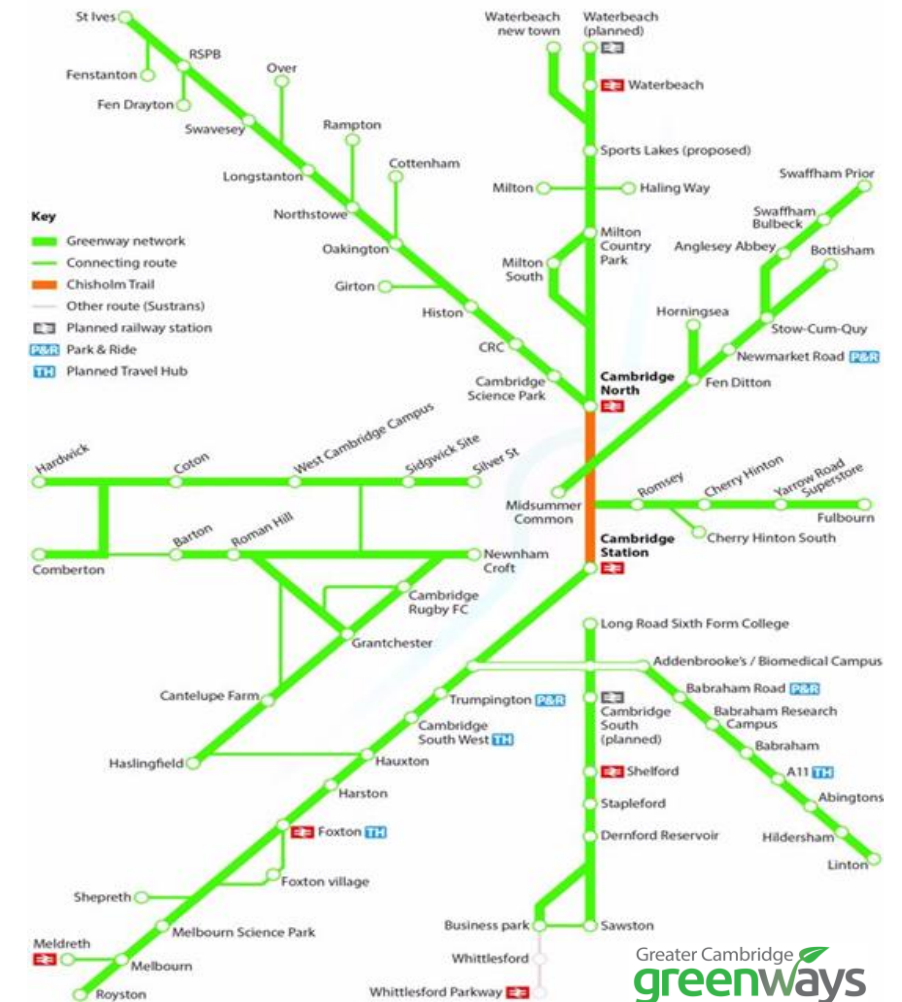
WSP: East routes - Fulbourn, Horningsea
Bottisham, Swaffhams

WSP: West routes - **Haslingfield, Barton
Comberton**

*Note - Linton Greenway is part of the CSET project and thus has been progressed separately.

Greenways network

Summer 2021



**GREATER
CAMBRIDGE
PARTNERSHIP**

Comberton and Haslingfield

Public Engagement

- Undertaken in July-August 2022;
- Sought feedback on the current design proposals; and
- Findings will be appended to the Joint Assembly Paper due to be published **11th November 2022**.

Joint Assembly and Executive Board

The Joint Assembly has been invited to consider the proposals for the Comberton and Haslingfield Greenways following the engagement to report findings and agree next steps:

- Review results of the Public Engagement exercise and agree any resulting design changes;
 - Agree the Outline Business Case;
 - Agree submission of required planning and consents applications;
 - Agree the programme for delivery;
 - Agree to finalise schemes for construction and complete Full Business Case; and
 - Agree to the construction of Early Works in 2023.
-
- Outline Business Cases for these routes are also appended to the Joint Assembly Paper.

Design Stage and Programme

- Progressing towards preliminary design and detailed design with particular consideration on early works.



Comberton

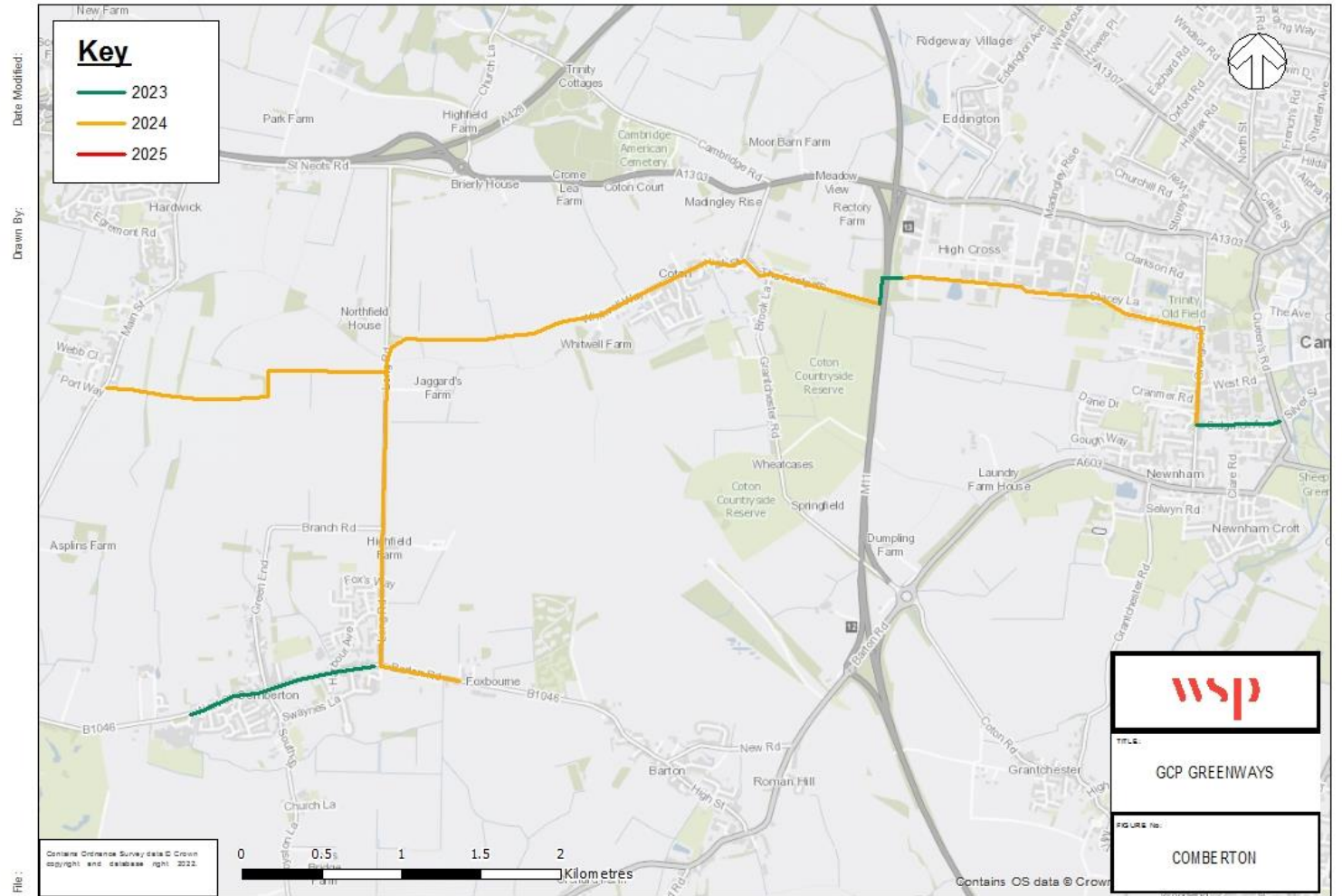
Public Engagement

Results highlighted key feedback regarding:

- Sidgwick Avenue/Adams Road
- University of Cambridge/Data Centre Links
- M11 Footbridge
- Long Road Underpass vs. Crossing
- Long Road
- Hardwick Spur Option
- Barton Road/Long Road Junction
- Red Advisory Lanes
- Lighting, materials and signage.

Early Works*

- Sidgwick Avenue
- M11 Footbridge to the Footpath
- Barton Road
- Comberton Village



*work within the highway boundary or PROW where no planning is required



**GREATER
CAMBRIDGE
PARTNERSHIP**

Haslingfield

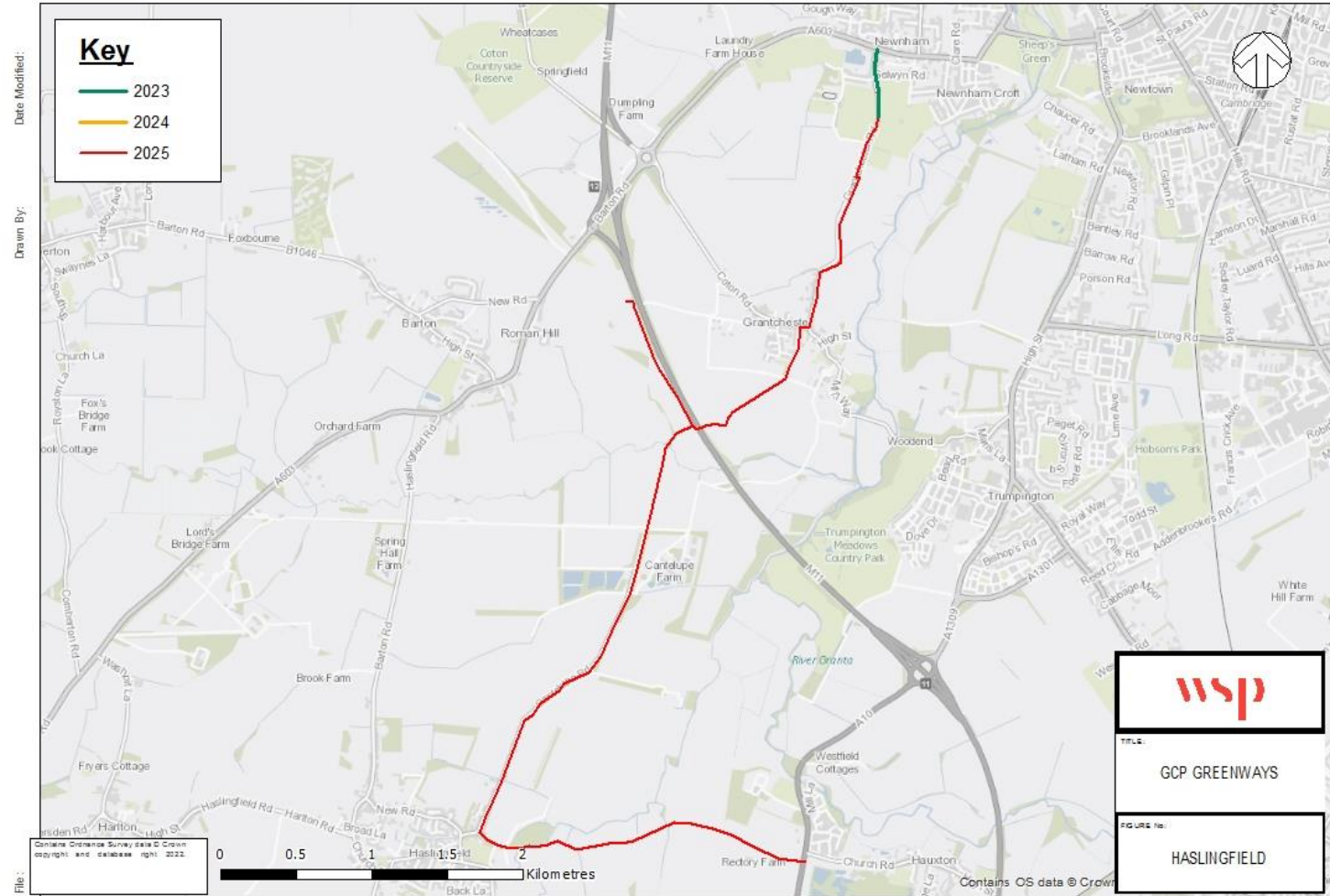
Public Engagement

Results highlighted key feedback regarding:

- River Cam crossing
- Cantelupe Road
- Bourn Brook Crossing
- Grantchester Section
- Cambridge Rugby Club to Grantchester Road junction with Barton Road
- Lighting, materials and signage.

Early Works*

- Junction with Barton Road to Cambridge Rugby Club section.



*work within the highway boundary or PROW where no planning is required



**GREATER
CAMBRIDGE
PARTNERSHIP**

Barton

Public Engagement

Public engagement events will be held to share the latest designs. Combination of in-person and virtual forums. The public engagement period for the Barton Greenway is scheduled to run for four weeks, **from 7th November to 2nd December.**

This will include:

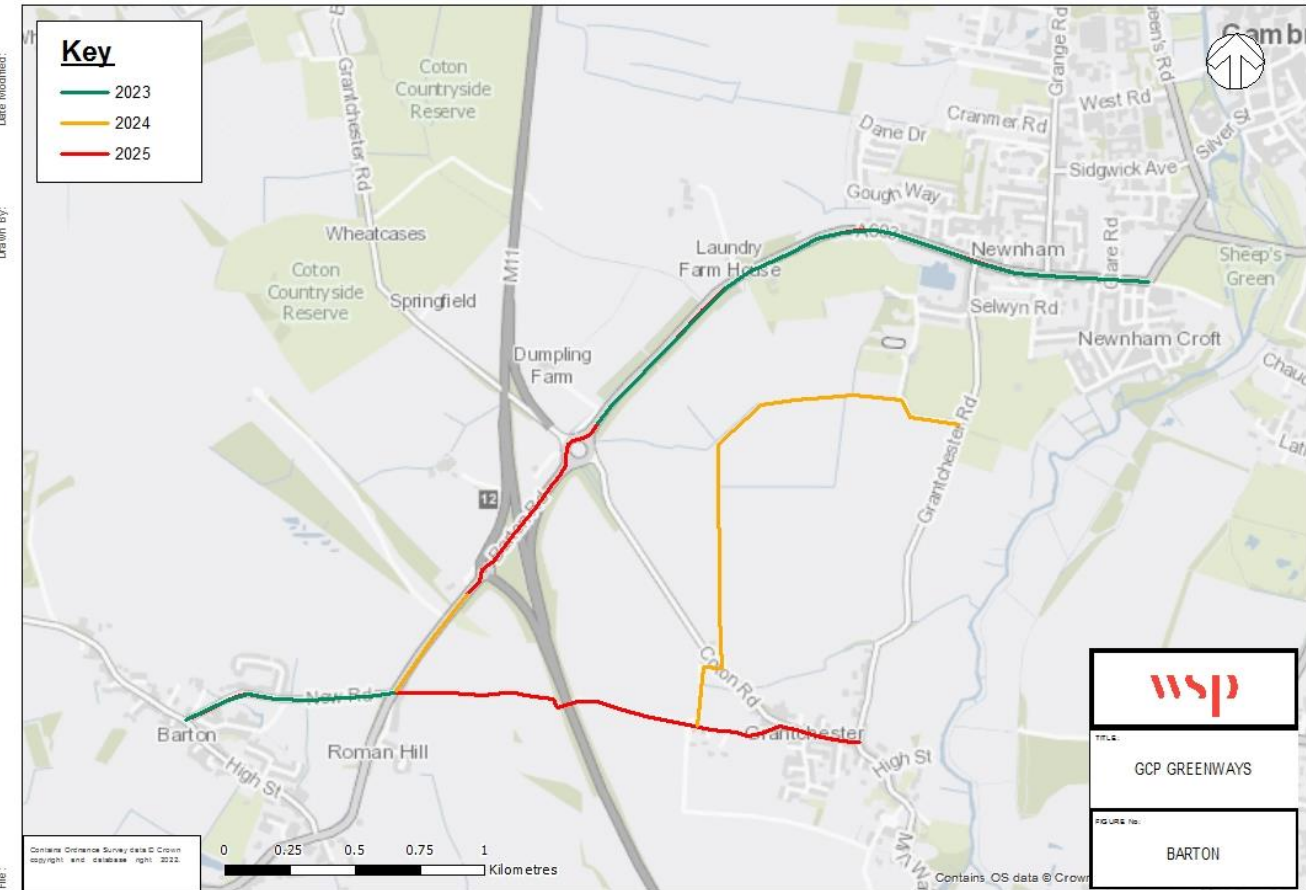
- Virtual event: Zoom, Thursday 17th November 6-8pm
- In-person event: Barton Village Hall, Thursday 24th November 2-7pm
- Online materials, technical drawings and feedback survey.

Stakeholder Engagement

In the run up to the public engagement, meetings and workshops will be held with key stakeholders including local authority officers, Non-Motorised User forum, Parish Councils, Landowners, Network Rail and National Highways.

Executive Board and Joint Assembly

The Barton route will be going to the Executive Board in March 2023.



**GREATER
CAMBRIDGE
PARTNERSHIP**

Greater Cambridge Greenways

Greenway	Approximate engagement timescale
Comberton	<i>Summer 2022 [now completed]</i>
Haslingfield	<i>Summer 2022 [now completed]</i>
Melbourn	<i>Autumn 2022 [now completed]</i>
Barton	<i>Autumn 2022 [underway]</i>
Horningsea	<i>Winter 2022</i>
Sawston	<i>Winter 2022</i>
Fulbourn	Winter 2022/23
Bottisham	Winter 2022/23
Swaffhams	Winter 2022/23
St Ives (initial tranche of schemes)	Early 2023 (public consultation)
Waterbeach	Early 2023 (public consultation)
St Ives (remaining schemes)	Late 2023 (public consultation)



Greater Cambridge Greenways

Next Steps

- Progressing towards preliminary and detailed design (2022/2023) particularly in terms of the early works.
- Barton Public Engagement Events:
 - Engagement period – **Monday 7th November to Friday 2nd December 2022**
 - Virtual Event (via Zoom) – **Thursday 17th November 6-8pm**
 - In-person event (Barton Village Hall) – **Thursday 24th November 2-7pm**

For more information about the overall project and each Greenway, visit [Greater Cambridge Greenways - Greater Cambridge Partnership](#).

Greater Cambridge
greenways



**GREATER
CAMBRIDGE
PARTNERSHIP**